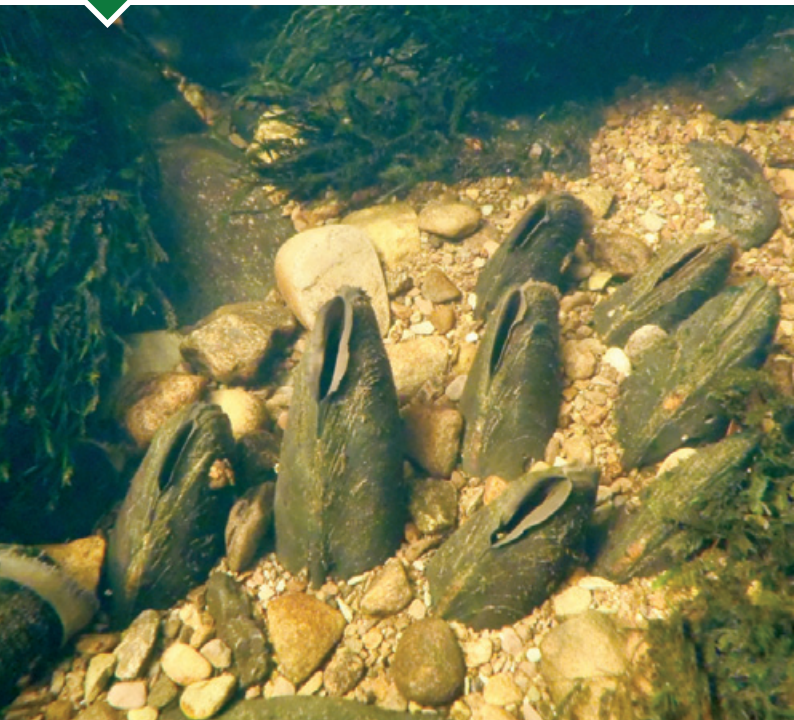




# KerryLIFE



Sustainable land use management for the conservation of the freshwater pearl mussel



**KerryLIFE** is a demonstration project to restore two internationally important freshwater pearl mussel (*Margaritifera margaritifera*) populations.

The freshwater pearl mussel is a long lived animal which requires high water quality with low levels of fine silt and nutrients.

The project will operate in the Blackwater (Kerry) and Caragh rivers from 2014 to 2019. These rivers host two of the largest breeding populations of mussels in Ireland; however, habitat degradation and declining water quality are threatening the species survival.

### **KerryLIFE aims to:**

- develop practical conservation measures
- demonstrate sustainable land use management
- produce guidance for the farming and forestry sectors
- enhance awareness of the species and its conservation

**KerryLIFE is working with local communities and project partners to secure the future of the mussel.**

To find out more about the project please contact the **KerryLIFE Project Office** on **+353 (0) 76 1002621** or visit **[www.kerrylife.ie](http://www.kerrylife.ie)**